

# BVF 801

## Programmable smart thermostat



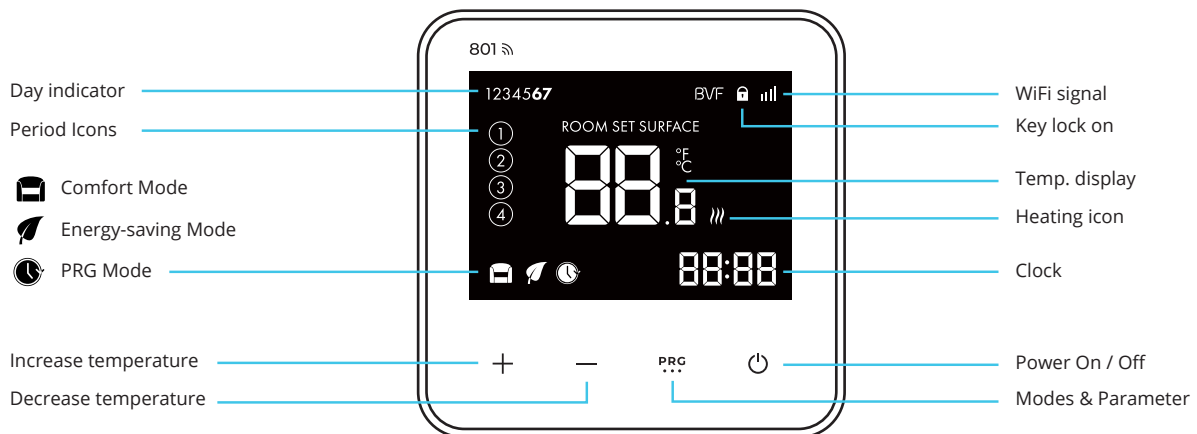
### SPECIFICATION

Operating voltage:	230V AC, 50/60 Hz
Capacity:	3600W/16A
Standby consumption:	0.5W
Display:	LCD White backlight
External Sensor:	NTC 10kΩ @ 25°C
IP protection rating:	IP 30
Housing:	White ABS to UL94-5 fire standard
Temperature settings:	5°C–80°C, 0.5°C
Accuracy:	± 0.5°C
PRG options:	7 days, four cycles each day
Housing dimensions:	86 mm × 86 mm × 16 mm
Relay inst. dimensions:	Ø 65 mm diameter, standard



### WIFI CONNECTION

Please scan the QR code for detailed instruction or visit [bvfheating.com/801connect](http://bvfheating.com/801connect)



### SETTING COMFORT MODE AND ENERGY-SAVING MODE

Switch between modes using the **PRG** button.

1. Choosing the Comfort Mode [Icon] you may assing temperature using **-** or **+** buttons.
2. Choosing the Energy-saving Mode [Icon] you may assing temperature using **-** or **+** buttons.

### CLOCK & 5+1+1 PRG SETTING

PRG function allows you to set different temperatures throughout the day. For example, you may want the home warm in the morning, cooler when you leave it for the day, and then warmer in the evening when you return. The thermostat offers 7 days programming option, four different temperature levels for each day. Default comfort levels are pre-programmed; still you can change them easily with the following method:

Press and hold **PRG** button for 5 seconds,

1. press **-** and **+** to adjust the clock (min-hour-weekday), each press of **PRG** will go into the next setting,
2. after the clock adjustment, press **PRG** to change day. By pressing **-** and **+** you can set the desired time and temperature of each period. (Weekday-period- time- temp.) Each press of the **PRG** button goes into the next item setting.

**DEFAULT VALUES**

Period	Wake up ①		Leave Home ②		Return Home ③		Sleep ④	
	Time	Temp.	Time	Temp.	Time	Temp.	Time	Temp.
1-5 (Mon.-Fri.)	7:00	22°C	8:30	19°C	17:00	22°C	22:00	19°C
6 (Sat.)	8:00	22°C	8:30	22°C	17:00	22°C	22:00	19°C
7 (Sun.)	8:00	22°C	8:30	22°C	17:00	22°C	22:00	19°C

**KEY-LOCK FUNCTION**

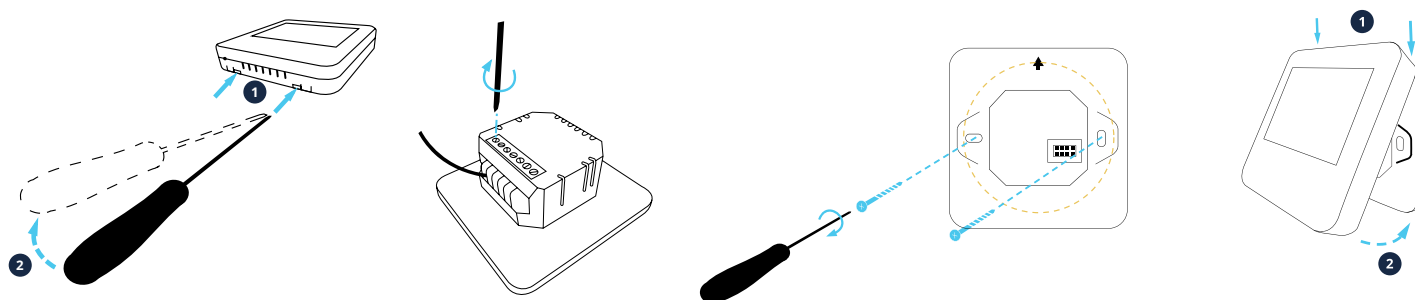
In order to avoid unauthorised access (hotels, public areas, child room) you can activate the key lock function from parameter settings page 12. To unlock your device long press the **—** and **+** buttons for ~5 seconds.

**PARAMETER SETTINGS**

During the power off mode, to access or modify parameter settings, please press and hold the **PRG** and **+** buttons simultaneously for ~8 seconds until the MENU appears showing 01 which is menu 1. Each press of the **PRG** button goes to the next MENU.

Menü	Description	Range	Default
01	Temp. Offset	-8°C ~ 8°C	0
02	Set Point Max.	5°C ~ 80°C	35°C
03	Set Point Min.	5°C ~ 80°C	5°C
04	Sensor Select	ROOM SURFACE Room + Surface	
05	Frost Protection Temp.	5°C ~15°C	5°C
06	Surface Temp. Display	Read Only	
07	High Temp. Protection	10°C ~ 80°C	32°C
11	Reset	rE(Yes)	
12	Key lock	0 - off, 1 - on	0
14	OWD function ON/OFF Select	OFF - off, ON - on	OFF
15	OWD Detect Time Select	2 ~ 30 mins	15 mins
16	OWD Drop Temp. Select (within detect time)	2 / 3 / 4°C	2°C
17	OWD Delay time select (Return to previous working status)	10 ~ 60 mins	30 mins
18	The temp. diff to exit high protection mode	1°C ~ 3°C	1°C
19	External sensor temp. offset	-8°C ~ 8°C	0
20	Energy optimisation	1: electric radiator 2: heating panel 3: ceiling heating 4: floor heating	2
21	Brightness (Standby Mode)	0 - 100%	5%
22	APP alarm when overheating protection	0 - off, 1 - on	0
23	Software version	Read Only	

**INSTALLATION & WIRING DIAGRAM**



**EXTERNAL SENSOR**

