

# BVF 24-F

## RF room thermostat

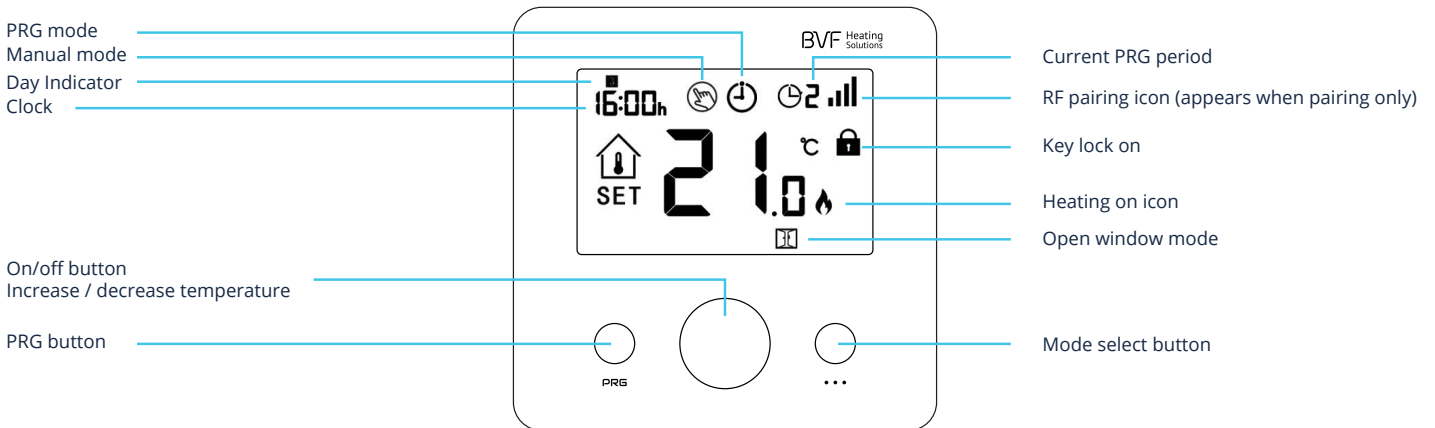


### TECHNICAL DATA

Thermostat Operating Voltage:	2 x AAA 1.5V, alkaline batteries
Backup Storage:	EEPROM
Frequency:	868MHz
Receiver capacity:	
24-X	3600W/16A
24-A	3600W/16A
Switching options:	5+1+1 day, 4 periods each day
Temperature settings:	5°C ~ 35°C, 0.5°C increments
Accuracy:	+/- 0.5°C
Thermostat dimensions:	86mm x 86mm x 26.5mm
Color:	White
IP protection rating:	20
Certification:	CE

### PRODUCT FEATURES

- Large display can be clearly read with the background lighting
- Easy to fit thermostat and receiver
- Knob button make it easy to use.
- 4 periods of each day programmable (5+1+1)
- The display shows the set and the measured temperature
- Compatible with 24-A, 24-P, 24-X



### CODE PAIRING

According to the receiver's manual.

### MODE SELECT

Press **•••** button to select PRG mode / manual mode / away mode.

### CLOCK

Under thermostat on, press and hold **•••** button for 3s, set the clock by adjusting the knob to left or right, each press of **•••** button will go to next item setting.

## PRG SETTINGS

Press and hold **PRG** button for 3s to enter program setting.

Set the schedule (Weekday-Period-Start time-Temp.) by adjusting knob to left or right to change value setting, each press of **PRG** button will go to next item setting. Weekday is fixed( Mon.-Fri., Sat., Sun.)

Default values:

Period	Wake up 1		Leave Home 2		Return Home 3		Sleep 4	
	Time	Temp.	Time	Temp.	Time	Temp.	Time	Temp.
1-5 (Mon.-Fri.)	7:00	22°C	8:30	19°C	17:00	22°C	22:00	19°C
6 (Sat.)	8:00	22°C	8:30	22°C	17:00	22°C	22:00	19°C
7 (Sun.)	8:00	22°C	8:30	22°C	17:00	22°C	22:00	19°C

## KEY-LOCK FUNCTION

Under child lock ON (refer to menu12 of parameter setting ), the buttons will be locked once backlight off, if so you can long press on/off button to unlock.

## OPEN WINDOW DETECTION (OWD) FUNCTION

When the Open Window detect function is enabled in the parameter setting, the system will automatically stop heating when it detects a sudden drop of room temperature (2°C in 15 minutes as default). This is normally caused when a window or door is opened without turning off the heating device.

The device will return to the previous mode of operation after 30mins, then  disappear. Press any button will exit OWD function during the heating off period.

## PARAMETER SETTINGS

Turn off thermostat, long press Knob button to enter parameter setting page, each press of **•••** button will go to next item setting. By adjust knob to left or right to change value setting. After setting, long press knob button to exit.

Menu	Description	Range	Default
01	Temp. Offset	-8°C ~ 8°C	0
02	Set Point Max.	5°C ~ 35°C	35°C
03	Set Point Min.	5°C ~ 35°C	5°C
04	Sensor Select	0: I or E 1: I & E 2: I 3: E (I = Internal sensor, E = External sensor)	2
05	Frost Protection Temp.	Off; 5°C ~15°C	5°C
06	Surface Temp. Display	Read Only	
07	High Temp. Protection	5°C ~ 80°C	32°C
09	Dead zone	0°C ~ 3°C	0°C
11	Factory reset	0: No 1: Yes, then press on/off button for 5s, until thermostat restart	
12	Key lock	0 - off, 1 - on	0
14	OWD function ON/OFF select	0 - off, 1 - on	0
15	OWD Detect Time Select	2 ~ 30 mins	15 mins
16	OWD Drop temp. select (within detect time)	2 / 3 / 4°C	2°C
17	OWD Delay time select (Return to previous working status)	10 ~ 60 mins	30 mins
18	The temp. diff to exit high protection mode	1°C ~ 3°C	1°C
19	External sensor temp. offset	-8°C ~ 8°C	0
20	Energy optimisation	1: electric radiator 2: heating panel 3: ceiling heating 4: floor heating	2
21	Software version		
22	Software version		

## INSTALLATION

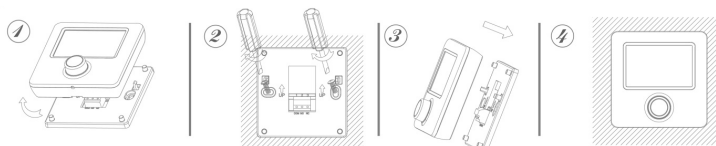
Mount the thermostat at eye level. Read the instructions fully so you get the best from our product.

Do not install near to a direct heat source as this will affect functionality. Do not push hard on the LCD screen as this may cause irreparable damage.

Step 1: Carefully separate the front half from the back plate.

Step 2: Screw the thermostat back plate securely on wall with provided screws

Step 3: Clip the front of the thermostat onto the back plate.



# BVF 24-P

RF receiver for infrared heating panel

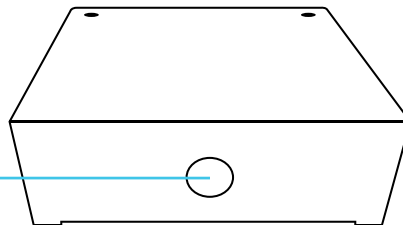


## TECHNICAL DATA

Operating voltage:	230V, 50/60Hz
Capacity:	10A
Frequency:	868MHz
Dimensions:	70mm x 41.5mm x 140mm
Color:	White
IP protection rating:	IP 20
Certification:	CE



Start pairing with this button  
Long press for 3 seconds



## LED COLORS

- Heating panel is connected or plugged in. (Flashing)
- Heating is active. (Steady)
- Pairing mode. (Flashing)

## PAIRING WITH 24-F THERMOSTAT. STEP BY STEP

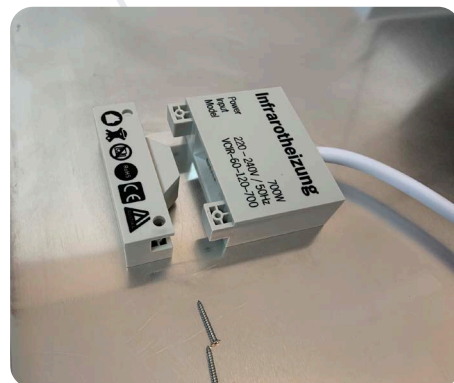
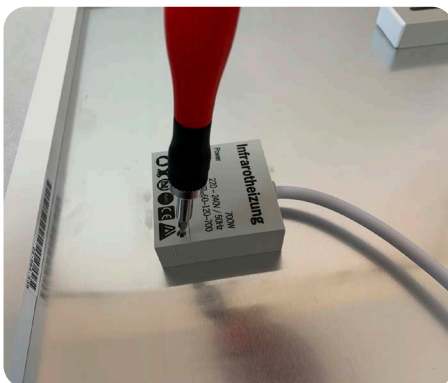
Make sure the receiver and the thermostat is close to each other.

1. Long press (3 seconds) the code pairing button on the receiver until LED starts flashing yellow.
2. Turn off sender (24-F) by pressing On/Off button, than long press **...** button until the RF code shows on the top of the screen (XXXX).
3. Rotate the main button (24-F) to left or right. **RF icon appears for a second only. RF icon will not remain on the screen.** Code pairing is successful.
4. Wait for a while until **RF icon** disappear. Code pairing finished. **RF icon** will not remain on the screen.

**IMPORTANT: Please note the delay time. The thermostat starts heating in 30 seconds after the new set temperature.**

**INSTALLATION OF THE RECEIVER**

1. Make sure that the heating panels is disconnected.
2. Please remove the blind plug with the screwdriver included in the receiver box.



3. Connect the 24-P receiver according to the picture below. Fix it with the screwdriver included in the packaging.

