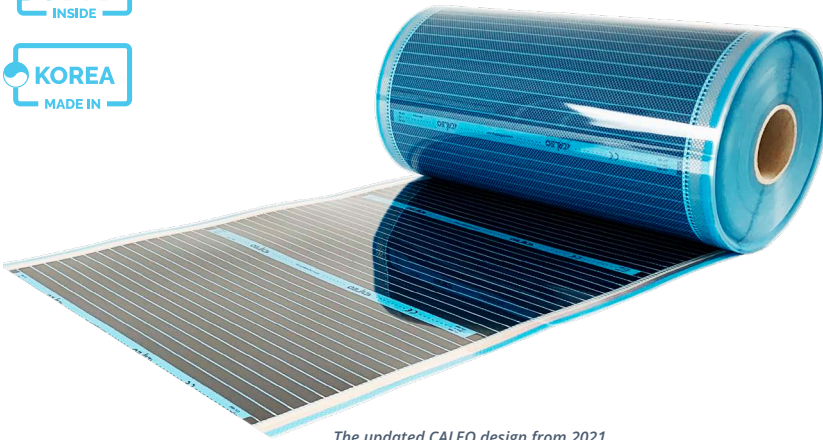




# 2024

## Innovative Heating Systems



The updated CALEO design from 2021



**230V**  
Standard supply voltage



**80 - 130 - 160W/m<sup>2</sup>**  
Performance



**CNT TECHNOLOGY**  
Unlimited lifetime



**30 - 50 - 80cm**  
Width



**6mm**  
Installation thickness

CALEO CNT heating films are available in different sizes and performance for the installation of surface heating systems. Types with lower performance of 80 and 130W are suitable for underfloor heating, while the high-performance CNT30 product range of 160W/m<sup>2</sup> can only be installed as wall and ceiling heating. Heating film technology is a unique opportunity for modern building industry and building engineering.

Using heating film, it is possible to install primary heating systems or even the comfort heating of just one room quickly and at low investment costs. Extra-thin installation layers allow for creating a surface heating without the demolition of the existing concrete.



## ENGINEERING FREE

CALEO heating film systems do not require maintenance or hidden warranty services. Our systems can be activated immediately after installation/handling over, and can be fully independent from environmental effects (such as blind concrete wetness, burst pipe). The heating system can be powered down at the end of the heating season by simply a button on the thermostat, whereas the activation also requires only the turning-on of the thermostat and the setting of the desired temperature.

## QUALITY

When compared with traditional electric floor heating solutions and heating films, CALEO 80-130 heating film products, in full compliance with European requirements and standards, ensure outstandingly economical and safe operation.



DO YOU HAVE ANY FURTHER QUESTIONS?  
[bvfhheating.com/caleo](https://bvfhheating.com/caleo)





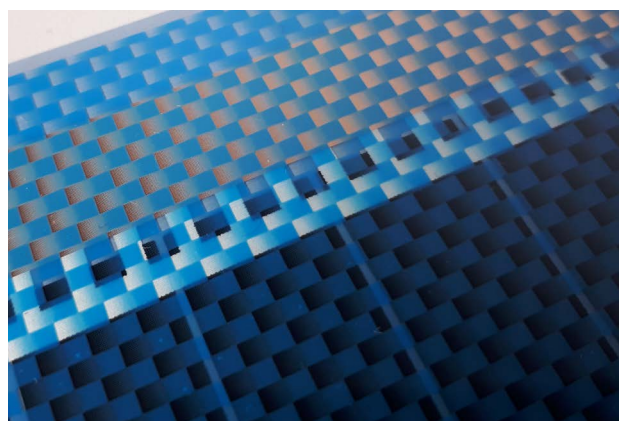
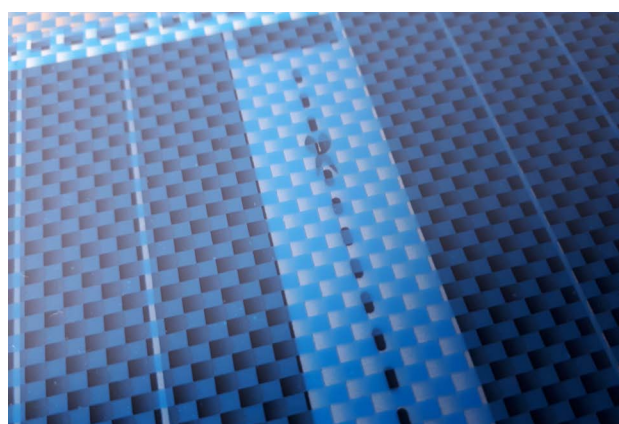
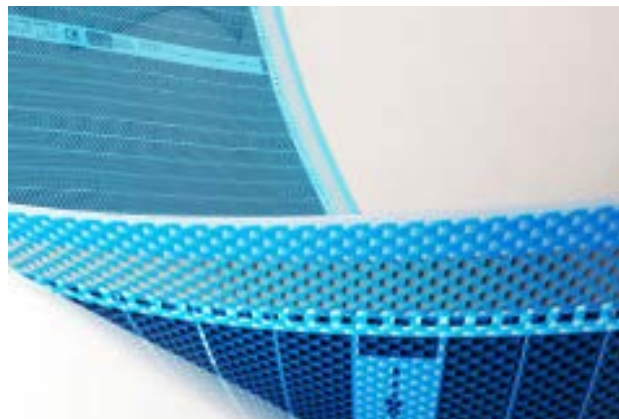
## CNT SMART TECHNOLOGY

Learn more about BVF-CALEO's latest surface heating technology that replaces the "conventional heating film", which had been developed since 2005 through 4 generation types. In the production technology, the use of the CNT (carbon Nano tube) heat exchanger with extreme load capacity is a real innovation.

The market leader CALEO 80-130 heating film range, which complies with all European requirements and standards, provides a more economical and safe operation when compared to conventional electric floor heating and heating films.

On both sides of the CALEO heating film, there are high purity copper conductors attached to a Nano-tech heating element through a patented trapezoid-silver mesh. Electrical resistance is generated between the two conductors, which warms up the special carbon heating element to its optimum temperature depending on the performance. The heating film transfers its own heat to the flooring through heat transfer / heat conduction.

CALEO heating films consist of five layers and basically 4 main components. The production of these components from carefully selected raw materials, their treatment in a heat chamber, as well as the high quality laminating of the layers are indispensable requirements for producing a robust final product. The quality of raw materials and Nano-technological printing also play an important role in achieving maximum efficiency.



## MAXIMUM COMFORT

Overhead costs of BVF and CALEO systems are positively low, although there are other aspects to consider when choosing the perfect heating system:

- low investment cost
- silent and safe
- simple and quick implementation
- maintenance-free operation
- control by rooms

## TECHNICAL DATA

Capacity:	80-130-160 W/m <sup>2</sup>
Voltage:	230V
Width:	30-50-80 cm
Thickness:	338 micron (0,3 mm)
Outer surface insulation:	3x PET
Wiring:	Connection set
Certificates:	CE



## CALEO REG - extra thin floor heating film



PLACE YOUR ORDER AT  
[partnerzone.bvfheating.com](https://partnerzone.bvfheating.com)



**230V**  
Standard supply voltage



**80 and 130W/m<sup>2</sup>**  
Performance



**CNT TECHNOLOGY**  
Unlimited lifetime



**50 - 80cm**  
Width



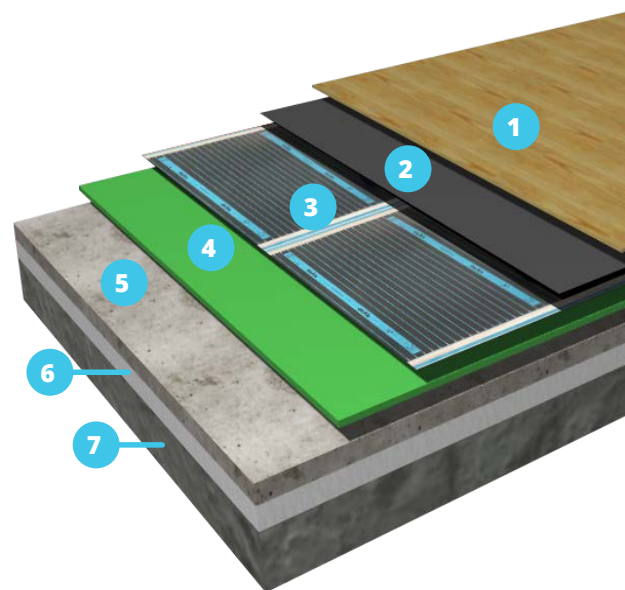
**6mm**  
Installation thickness

### EXTRA THIN FLOOR HEATING SYSTEM FOR THE HEATING OF LAMINATED FLOORS AND PARQUET FLOORS

Perfect renovation system. Heating elements are being placed directly under the floor.

CALEO REG system, in comparison with traditional heat storage floor heating systems, uses the heat storage ability of the floor only minimally, resulting in the heating-up time being minutes rather than hours. To be placed in the traditional way, with no need for special layers. It allows easy implementation of both stand alone and supplementary floor heating systems.

Each room is a separate heating circuit; thus the system can be implemented in more phases, or in just one room. The system is only 6mm thick, so causes no surface increase. It can be easily installed during a simple surface replacement.



### TECHNICAL DATA

Heating element:	CALEO 80-130 W/m <sup>2</sup> heating film
Install height:	6 mm
Built-in heating capacity:	Individual, depending on the energy demand of the building
Surface temperature of floor:	Max. 29°C by standard

- 1.** Floated floor (laminated floor) **2.** PE humidity barrier **3.** CALEO heating film **4.** XPS insulation board (min. 6 mm) **5.** Concrete **6.** Floor insulation **7.** Concrete slab



DO YOU HAVE ANY FURTHER QUESTIONS?  
[bvfhheating.com/caleo](https://bvfhheating.com/caleo)





**230V**  
Standard supply voltage



**160W/m<sup>2</sup>**  
Performance



**CNT TECHNOLOGY**  
Unlimited lifetime



**30cm**  
Width



**8cm**  
Installation thickness

## SURFACE HEATING SYSTEM INSTALLED IN PLASTERBOARDS

Wall and ceiling heating system. Ideal surface heating solution for lightweight buildings or buildings with large inner height.

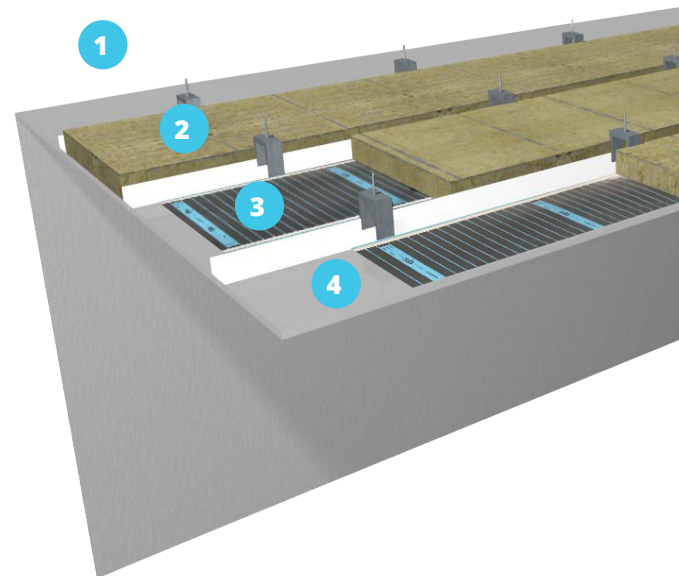
It is one of today's most expanding heating solutions. In case of lightweight structures the plasterboard made false ceiling is included in the construction, so there is no need for extra expenses. CALEO 160 products are unique with their 30-cm size and optimized capacity, which perfectly adapt to modern building structures.

In general, 20-40% of the ceiling is enough for the achievement of necessary heating capacity.



## TECHNICAL DATA

Heating element:	CALEO 160 W/m <sup>2</sup> heating film
Install height:	8 cm
Built-in heating capacity:	Individual, depending on the energy demand of the building
Surface temperature:	Max. 50°C by standard



**1. Insulated ceiling structure** **2. Rock wool insulation** **3. CALEO heating film** **4. Suspended ceiling (plaster board)**



DO YOU HAVE ANY FURTHER QUESTIONS?  
[bvfhheating.com/caleo](https://bvfhheating.com/caleo)

# BVF H-MAT 100-150 Series



PLACE YOUR ORDER AT  
[partnerzone.bvfheating.com](https://partnerzone.bvfheating.com)



**230V**  
*Standard supply voltage*



**100 and 150W/m<sup>2</sup>**  
*Performance*



**SELF-ADHESIVE**  
*Fast and easy installation*



**50cm**  
*Width*



**3,8mm**  
*Installation thickness*

## FOR CERAMIC TILES, GRES TILES AND VINYL FLOORS

The thickness of the BVF H-MAT electric heating mat is only 3.8mm, so unlike conventional heating cables, it is possible to build individual and additional comfort floor heating without raising the floor level, since the tile adhesive or the floor levelling layer should be at least as thick as this.

After installation, the heating mat floor heating system can be put into operation immediately, and it can be connected directly to the thermostat with a 2.5m long factory-installed connection cable. Thanks to Twin-Conductor technology, it has to be connected on one side only.

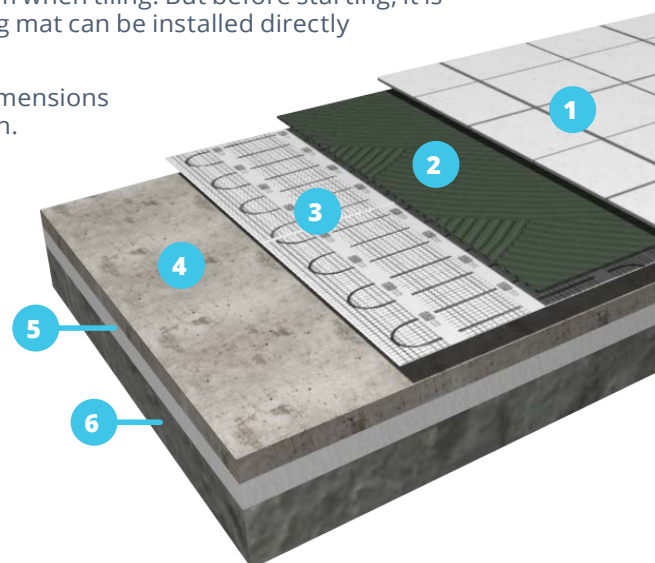
Whether it is a new heating system or only a floor replacement, the installation is easy. For bathrooms, regardless of the real heat demand, we recommend heating mats with a larger product capacity (150W/m<sup>2</sup>) for quick and dynamic heating.

BVF H-MAT electric heating mats do not require a special layer system when tiling. But before starting, it is advisable to prepare the leveling of the blind concrete, or the heating mat can be installed directly by using flexible tile adhesive.

The flexible carrier layer can easily be adapted to the floor plan dimensions of the room, the 50cm width is therefore only a packaging dimension. Its self-adhesive surface securely fixes the heating mat in place during the tiling.

## FAST AND SIMPLE SOLUTION

The BVF H-MAT twin-core heating mats have connection point only on one side. There is no need for any complicated preliminary design, nor for special order of layers for the installation. Only bottom insulation, complying with the standards in force, is required for the most economical operation. It can be laid directly on the concrete floor and can be covered with either tile adhesive or a concrete levelling compound layer.

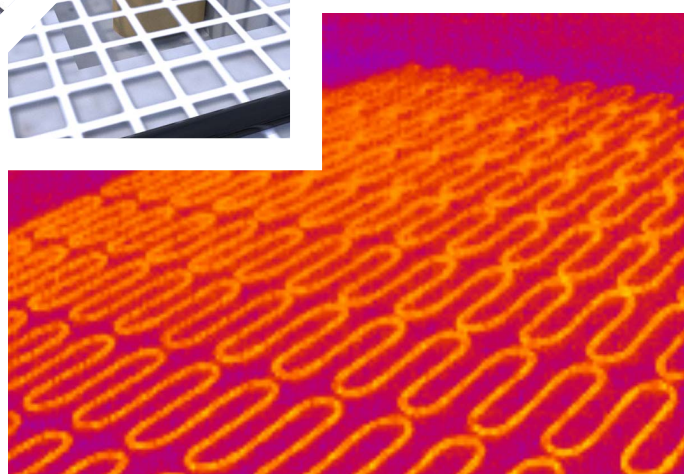


**1. Cover 2. Tile adhesive / floor levelling compound min. 6mm 3. BVF H-MAT heating mat 4. Concrete 5. Floor insulation 6. Foundation**



DO YOU HAVE ANY FURTHER QUESTIONS?  
[bvfhheating.com/hmat](https://bvfhheating.com/hmat)





## RECOMMENDED CONTROL



**Netmostat N-1**  
Wi-Fi thermostat



## TECHNICAL DATA



Capacity:	100W/m <sup>2</sup> , 150W/m <sup>2</sup>
Voltage:	230V
Sizes:	1-12 m <sup>2</sup>
Cable type:	Double insulation, grounded
Cable diameter:	3,8 mm
Heating wire insulation:	Fluoropolymer
Cover insulation:	PVC
Packaging:	Carton box
Certificates:	CE



# BVF L-PRO 100 Series



PLACE YOUR ORDER AT  
[partnerzone.bvfheating.com](https://partnerzone.bvfheating.com)



**230V**  
Standard supply voltage



**100W/m<sup>2</sup>**  
Performance



**2 - 12m<sup>2</sup>**  
Ready to install sizes



**50cm**  
Width



**3mm**  
Installation thickness

Complete floor heating that can be installed even during cover replacement or before floor covering. Its implementation does not require special expertise or tools: the aluminum heating mat is factory-fitted, it only needs to be connected to a thermostat. The heating mat with the L-PRO aluminum texture provides a heat conduction that is more even than ever and it allows an electromagnetic shielding for the entire surface to achieve maximum comfort.

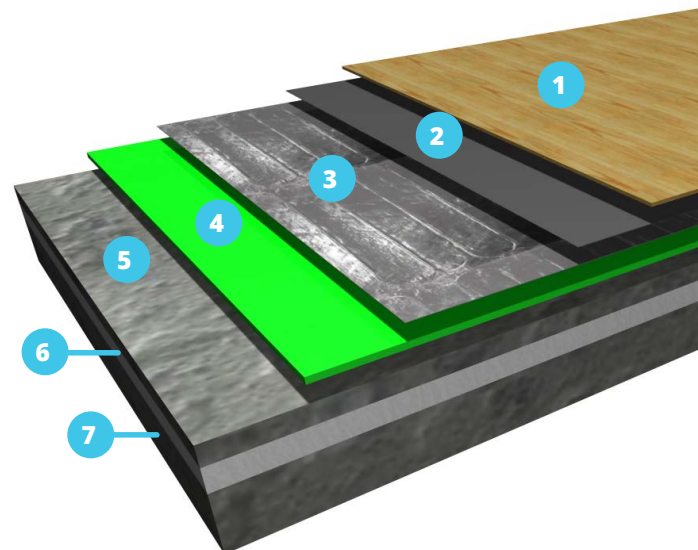
It can be implemented without raising the floor level. Easy-to-install electric floor heating for laminate flooring and strip parquet. **Not suitable for vinyl floors. Vinyl floors should be heated with electric heating mat embedded in self leveler.**

The thickness of the BVF L-PRO electric heating mat is only 3mm, so unlike conventional solutions, it is possible to build individual and additional comfort floor heating without raising the floor level.

## WHY IS A DOUBLE-LAYER ALUMINUM TEXTURE NEEDED?

The answer may seem simple: it functions as a heat mirror. Nevertheless, the answer is that it has several functions. The lower aluminum layer with carbon texture is responsible for even heat distribution, the reflection of radiating heat, and it also provides mechanical protection.

The upper layer has an even more important function. It is also to provide heat conduction among the cables, mechanical protection against damages, as well as to grounding and shielding for the entire surface.

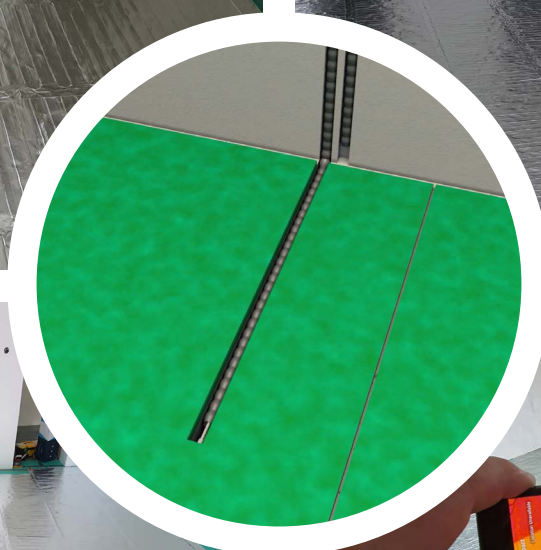
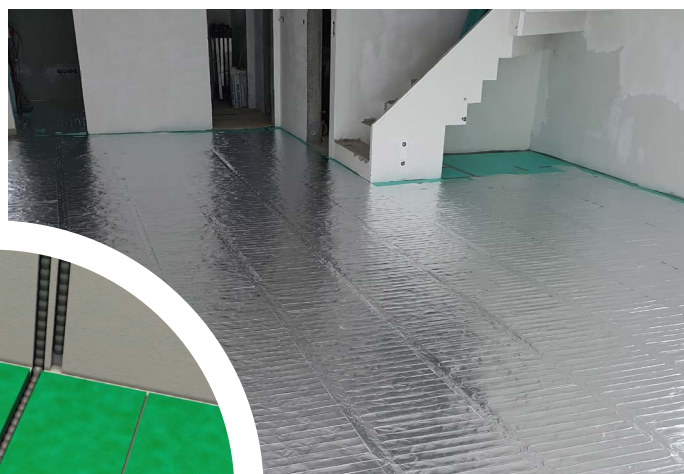


**1.** Laminate floor **2.** PE humidity barrier **3.** BVF L-PRO heating mat **4.** XPS insulation board (min. 6 mm)  
**5.** Concrete **6.** Floor insulation **7.** Concrete slab



DO YOU HAVE ANY FURTHER QUESTIONS?  
[bvfh heating.com/lpro](https://bvfh heating.com/lpro)





## RECOMMENDED CONTROL



**Netmostat N-1**  
*Wi-Fi thermostat*



## TECHNICAL DATA



Capacity:	100W/m <sup>2</sup>
Voltage:	230V
Sizes:	2-12 m <sup>2</sup>
Cable type:	Double insulation heating cable / grounded, shaded
Cable diameter:	1,0 mm
Core insulation:	Fluoropolimer
Surface material:	Alu fiber
Packaging:	Carton box
Certificates:	CE



**230V**  
*Standard supply voltage*



**10 and 20W/m**  
*Performance*



**10 - 200m**  
*Ready to install sizes*



**4,8mm**  
*Cable diameter*



**10 year**  
*Warranty*

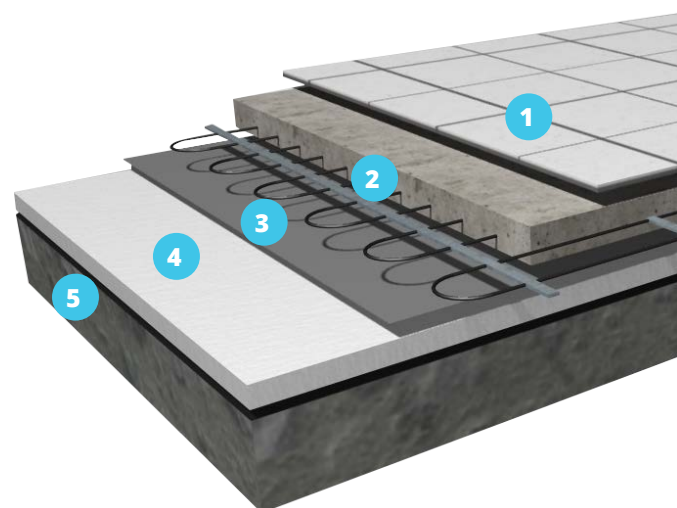
Electric floor heating cable technology has a history of nearly 40 years. During this time, its main features of low investment cost and reliability haven't changed. However, the technology has undergone significant changes. The BVF heating cables are manufactured using only twin-conductor technology, which ensures better operational efficiency and longer lifetime than ever before. The heating cable technology is basically designed for underfloor heating systems, however, today a number of applications other than the general use are known (e.g. pipe heating, tempering of industrial machines and pipe handling of thermal bridges, indoor defrosting, etc.).

The installation of floor heating cables, when laying out the concrete floor, can be carried out quickly and at extremely low cost.

### TECHNOLOGY

The BVF WFD Series twin-core heating cables have a wiring point only on one side. No complicated preliminary planning is required. The heating cable can be securely fastened to the factory equipped installation rail or to the concrete rebar mesh used to form a concrete floor. It does not require a special order of layers for installation, only under laid insulation complying with the standards in force, are required for the most economical operation.

The required heating performance per square meter can be adjusted by the spacing of the heating cables. The spacing distance depends on the heating energy demand of the building and the thickness of the base concrete.

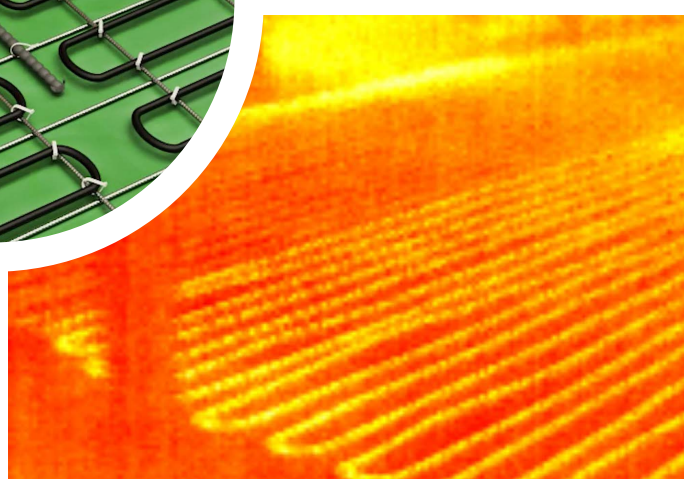
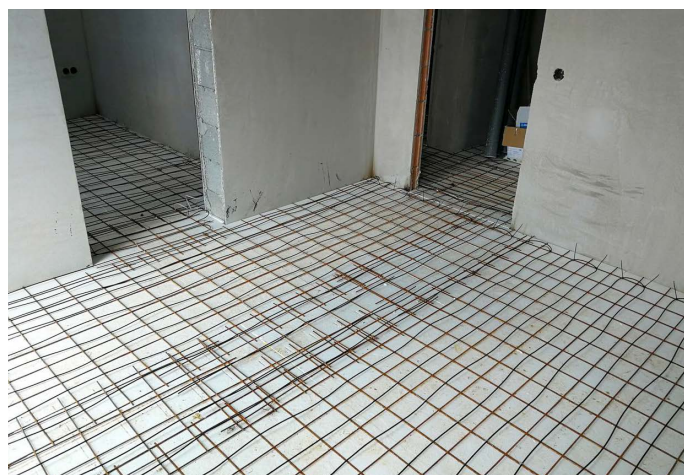
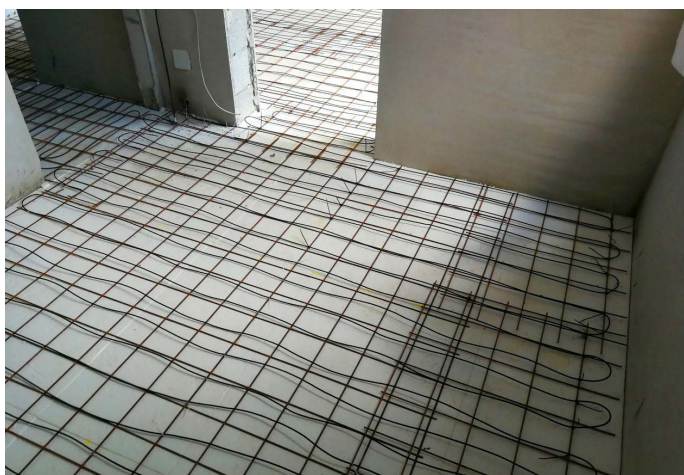


- 1.** Various floor covering **2.** Concrete + BVF WFD heating cable **3.** PE humidity barrier  
**4.** Floor insulation **5.** Foundation



DO YOU HAVE ANY FURTHER QUESTIONS?  
[bvfhheating.com/wfd](https://bvfhheating.com/wfd)





## RECOMMENDED CONTROL



**Netmostat N-1**  
*Wi-Fi thermostat*



## TECHNICAL DATA



Capacity:	20W/m and 10W/m
Voltage:	230V
Sizes:	10–200 meter
Cable type:	Double insulation, grounded
Cable diameter:	4,8 mm
Heating wire insulation:	Fluoropolymer
Cover insulation:	PVC
Fixing:	BVF fixing strap
Packaging:	Carton box
Certificates:	CE





**230V**  
Standard supply voltage



**28W/m**  
Performance



**23-122m**  
Ready to install sizes



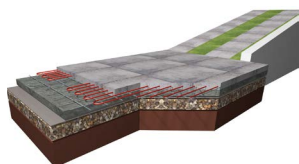
**7,6mm**  
Cable diameter



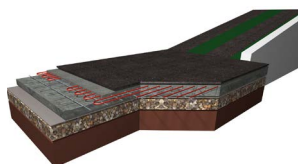
**10 year**  
Warranty

Safety enhancing and value adding investment. BVF SX 28 Snow Defrost outdoor heating cables are suitable for snow and ice melting on walkways, ramps and driveways. Due to their multiple insulation, they will not damage under extreme weather conditions or in a constantly wet environment.

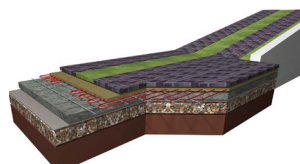
## TYPICAL SNOW MELTING INSTALLATIONS



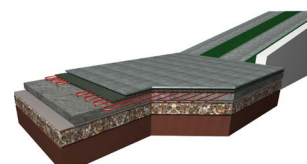
For concrete pavement  
(max. 80mm)  
250W/m<sup>2</sup>



For asphalt pavement  
(max. 50mm)  
300W/m<sup>2</sup>



For paving stone  
(max. 80mm)  
300W/m<sup>2</sup>



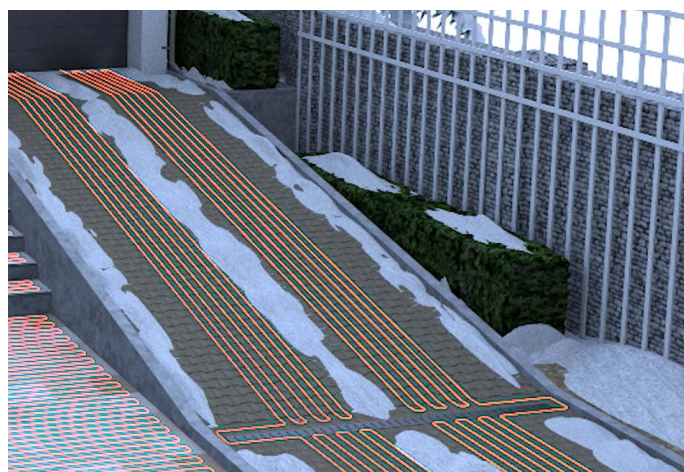
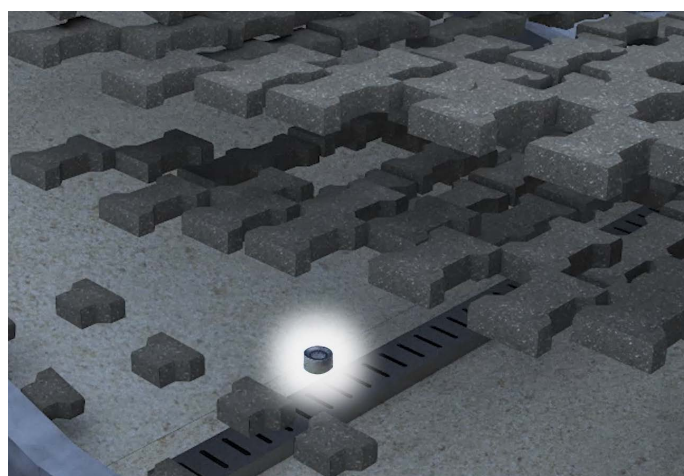
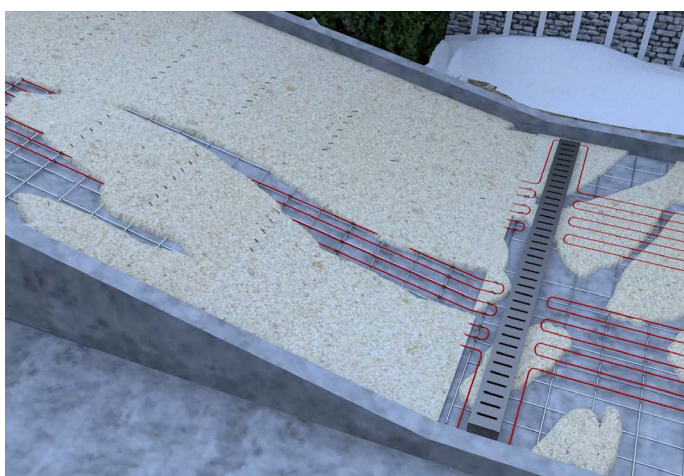
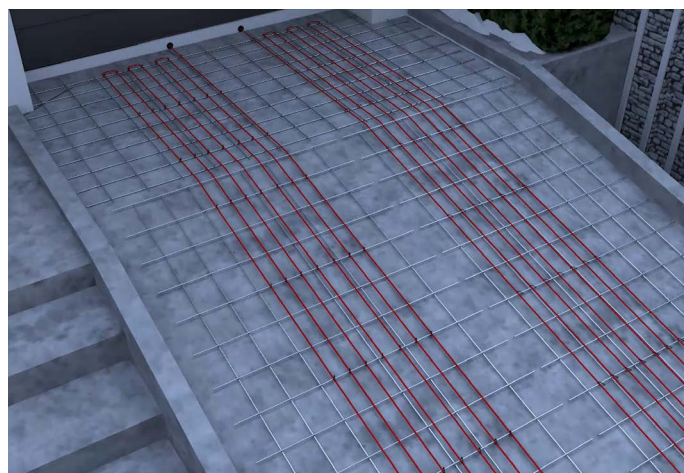
For outdoor ceramic tiles  
(max. 50mm)  
200-250W/m<sup>2</sup>

Type	Watts	Amps	Ohms	Length	Use	Concrete	Paving stone	Outdoor ceramic tiles	Asphalt
SX 28 - 640	640W	2,78	82,7	22,9m	Area: Track (50cm):	3-4 m <sup>2</sup> 6-8 m	2-3 m <sup>2</sup> 4-6 m	4-5 m <sup>2</sup>	2-3 m <sup>2</sup> 4-6 m
SX 28 - 890	890W	3,87	59,4	31,9m	Area: Track (50cm):	4-5 m <sup>2</sup> 8-10 m	3-4 m <sup>2</sup> 6-8 m	5-6 m <sup>2</sup>	3-4 m <sup>2</sup> 6-8 m
SX 28 - 1270	1270W	5,52	41,7	45,4m	Area: Track (50cm):	6-7 m <sup>2</sup> 12-14 m	4-6 m <sup>2</sup> 8-12 m	7-8 m <sup>2</sup>	4-5 m <sup>2</sup> 8-10 m
SX 28 - 1900	1900W	8,26	27,8	67,8m	Area: Track (50cm):	9-10 m <sup>2</sup> 18-20 m	7-8 m <sup>2</sup> 14-16 m	10-11 m <sup>2</sup>	6-7 m <sup>2</sup> 12-14 m
SX 28 - 2700	2700W	11,74	19,6	96,4m	Area: Track (50cm):	12-14 m <sup>2</sup> 24-28 m	10-12 m <sup>2</sup> 20-24 m	14-16 m <sup>2</sup>	9-10 m <sup>2</sup> 18-20 m
SX 28 - 3400	3400W	14,78	15,6	121,4m	Area: Track (50cm):	16-18 m <sup>2</sup> 32-36 m	13-15 m <sup>2</sup> 26-30 m	18-20 m <sup>2</sup>	11-13 m <sup>2</sup> 22-26 m



DO YOU HAVE ANY FURTHER QUESTIONS?  
[bvfhheating.com/sx](https://bvfhheating.com/sx)





## RECOMMENDED CONTROL



**BVF L-1**  
*outdoor smart thermostat*



## TECHNICAL DATA



Capacity:	28W/m
Voltage:	230V
Cable type:	Double insulation
Cable diameter:	7,6 mm
Heating wire insulation:	XPPE
Outside cover insulation:	PE and PVC
Connecting cable:	10m, twin-conductor
Packaging:	cast
Certificates:	CE



**230V**  
*Standard supply voltage*



**18-36W/m**  
*Performance*



**Can be cut to size**  
*Customized anywhere*



**5,9mm**  
*Cable thickness*



**10 year**  
*Warranty*

With its operating range calibrated between 0 and + 3°C, BVF SRHC 18/36 does not allow the pipeline and the circulating fluid to reach the freezing point nor to overheat. This way it can be economically operated on smaller sections even without a thermostatic control. It adjusts the performance between 1-38 watts, depending on the outdoor temperature and the temperature of the pipe section. Suitable for frost protection of pipes, gutters, taps, sliding gates and doors.

### PIPEHEATING WITH INTELLIGENT HEATING CABLE

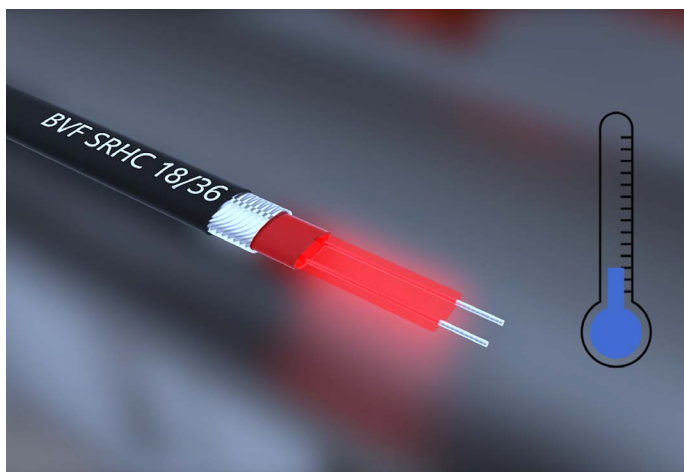
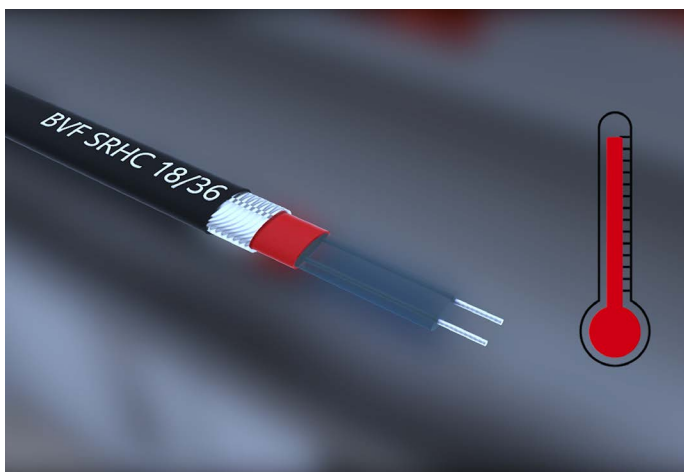
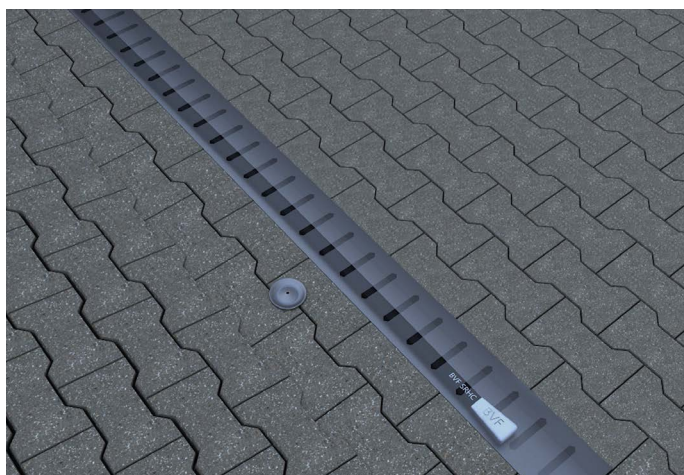
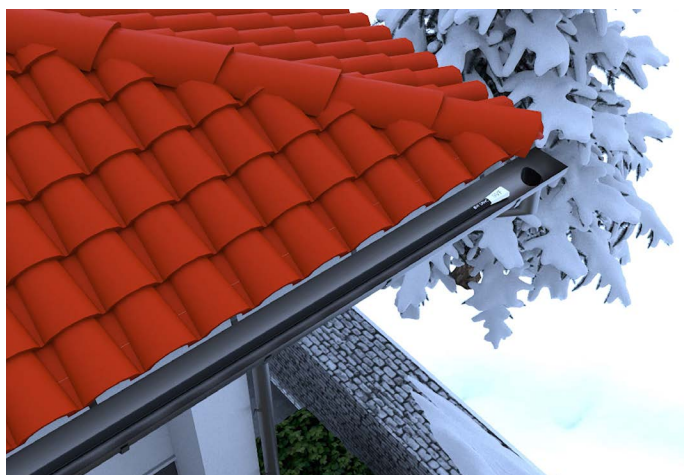
WHY IS IT INTELLIGENT? Depending on the temperature of the graphite-polymer heating element, it changes its own resistance. The performance of the heating cable varies according to the actual outdoor temperature, so if there is no risk of freezing, its power consumption drops drastically, approaching 0W/m.

With the use of the optional plug-in kit, the wiring is quick and easy, and does not require any special skills or tools. Any length can be customized.



DO YOU HAVE ANY FURTHER QUESTIONS?  
[bvfh heating.com/srhc](https://bvfh heating.com/srhc)





## RECOMMENDED CONTROL



**BVF L-1**  
*outdoor smart thermostat*



## TECHNICAL DATA



Capacity:	self-regulating 18/36W
Voltage:	230V
Cable diameter:	10,5 x 5,9 mm
Heating wire insulation:	XLPE
Cover insulation:	XLPE
Connecting cable:	BVF SRHC connection set
Certificates:	CE



**230V**  
*Standard supply voltage*



**500 - 2000W**  
*Performance*



**IP24**  
*Bathroom safe*



**Wi-Fi thermostat**  
*Integrated control*



**5 year**  
*Warranty*

Unique and clean design characterizes BVF's latest heating panel technology. The BVF CP1 product line uniquely combines well-known Scandinavian design with innovative technical solutions.

Complete heating systems down to -20°C. BVF products have been at the forefront of Internet remote access for nearly 10 years, so all types of our latest heating panels are equipped with the most modern WiFi module. The highly efficient heating element and the intelligent control provide energy saving options that make the CP1 heating system a real alternative to any heating solution in certified passive houses as well as for buildings with poor thermal insulation.

### OPTIONAL ROLLING STAND

In addition to the included wall console, a rolling stand can be purchased as an accessory for every BVF CP1 heating panel, in two colors. The rolling stand can be securely attached in 1 minute, so the heating panel can be easily moved and heats where it is needed. As a mobile version, the Wi-Fi module does not forget the settings, so we can also access our additional heating remotely. With its quick heating, it is also an ideal choice for making workstations more comfortable.



DO YOU HAVE ANY FURTHER QUESTIONS?  
[bvfh heating.com/wifi-heating-panel](https://bvfh heating.com/wifi-heating-panel)

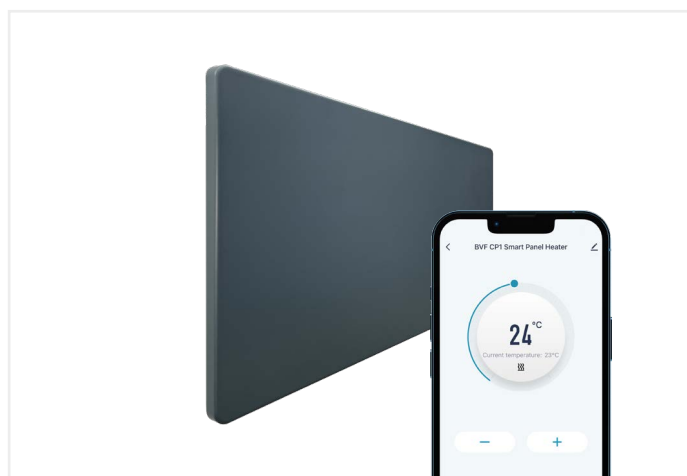




## iOS AND ANDROID APP



Download the **Tuya Smart** app from the Google Play store or the Apple AppStore.



## ADDITIONAL GLASS COVER

Additional design glass front cover for BVF CP1 heating panel, which lends premium elegance to any room. Simple & safe fixing on the heating panel with replacable glass design. The product is compatible only with the BVF CP1 electric heating panels.



## SIZES

Type	Size	Weight	Performance
CP1 500 ○	440×440×94 mm	3,9 kg	500 W
CP1 1000 ○	520×440×94 mm	4,4 kg	1000 W
CP1 1500 ○	680×440×94 mm	5,4 kg	1500 W
CP1 2000 ○	840×440×94 mm	6,4 kg	2000 W
CP1 1000 ●	520×440×94 mm	4,4 kg	1000 W
CP1 1500 ●	680×440×94 mm	5,4 kg	1500 W
CP1 2000 ●	840×440×94 mm	6,4 kg	2000 W

## TECHNICAL DATA

Performance range:	500–1000–1500–2000 W
Voltage:	230V
Cable length:	1,6m + EU plug
Color:	White / arsenic gray
Mounting:	Wall mounting bracket, stand feet
Control:	Integrated Wi-Fi thermostat
App:	Android and iOS
IP rating:	IP 24
Certificate:	CE





**230V**  
Standard supply voltage



**200 - 350W**  
Performance



**1,6m**  
Cable with EU plug



**60sec**  
Warm-up time



**2 year**  
Warranty

ADELIG smart mirror is a device which with that functions as a bathroom mirror with additional functions, such as displaying weather forecast, date and time, temperature and humidity, LED lighting, defog and heating. Available in two sizes. Android and iOS application available at your store.



**Defogging**



**LED light**



**Smart functions**

### COMFORT IN THE BATHROOM

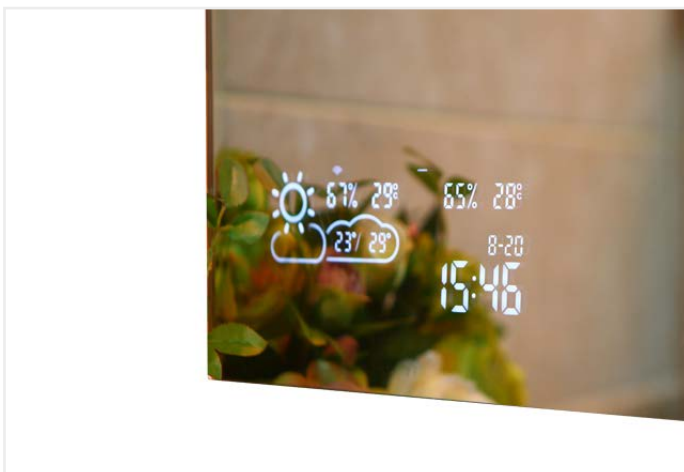
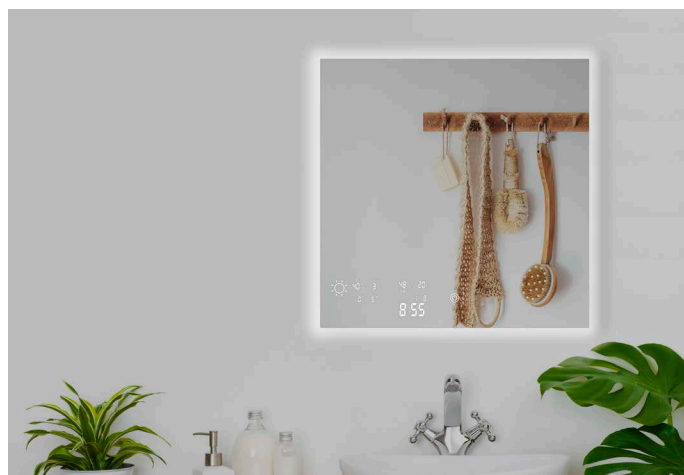
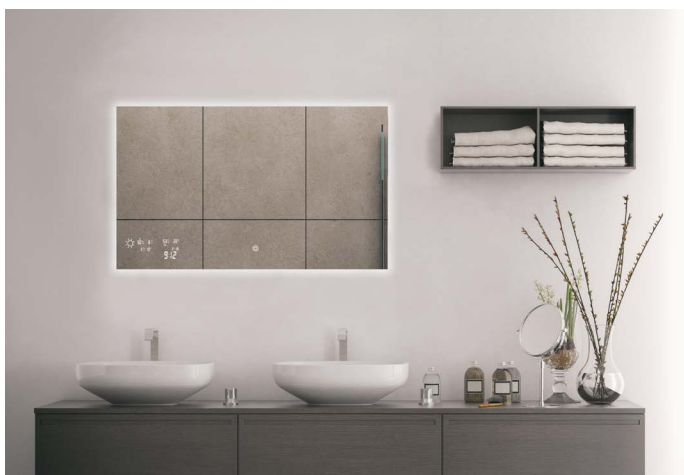
In addition to its main dehumidification function, BVF Adelig smart mirror can also be used as an additional heating element, as it has 4-5 times more power than classic dehumidifying films, and its surface temperature can reach up to 70 °C. With just one touch, the LED light can be switched on. With pressing and holding the touch key, heating function turns to active. By double-clicking, you can turn the smart panel on and off, which remains active in the background, so all data can be accessed in the phone application.

### iOS AND ANDROID APP



DO YOU HAVE ANY FURTHER QUESTIONS?  
[bvfheating.com/smart-mirror](https://bvfheating.com/smart-mirror)





## SIZES

Type	Size	Weight	Performance
ADELIG 200	600×600×44 mm	7,2 kg	200 W
ADELIG 350	600×1000×44 mm	12,2 kg	350 W

## TECHNICAL DATA

Performance range:	200 - 350W
LED light:	10 - 13W
Voltage:	230V
LED color temp. :	6000K
Cable length:	1,6m + EU plug
Frame:	Frameless
Application:	Android and iOS
IP rating:	IP55
Certificate:	CE



1,6m



# BVF L-1 - outdoor smart thermostat



PLACE YOUR ORDER AT  
[partnerzone.bvfheating.com](https://partnerzone.bvfheating.com)



**230V**  
Standard supply voltage



**Wi-Fi**  
Remote control



**No sensor**  
Smart weather forecast



**3600W / 16A**  
Relay load



**1 year**  
Warranty

For snow & ice removal and pipe heating. The unique sensor free technology allows for an even wider use of snow and ice removal systems. Quickly and at low costs, it ensures more efficient operation than ever before for heating car driveways, gutters and water pipes.

The thermostat follows the most accurate online weather forecasts and heats / preheats the surface to be tempered accordingly. Compared to traditional sensor designs, it operates the heating system faster and with less energy consumption, as it is based on forecasting. It not only melts snow and ice, it can also prevent its formation on the surface. The combined use of BVF L-1's special algorithm and accurate weather forecast closes the era of sensor thermostats. The thermostat communicates with the Tuya Smart app based on iOS and Android via the home Wi-Fi network. Through the application, it is possible to access all the settings of the thermostat and even control the thermostat remotely.

## iOS AND ANDROID APP



Download the Tuya Smart app from the Google Play store or the Apple AppStore.



## MODES AND SETTING OPTIONS



**AUTO MODE**  
smart weather forecast



**PROGRAM MODE**  
smart weather forecast



**NOTIFICATION MODE**  
sending a reminder in case of danger of frost



**MANUAL MODE**  
if there is no internet access

## TECHNICAL DATA

Relay load:	3600W / 16A
Voltage:	230V
Dimensions:	86 x 86 x 15 mm
IP rating:	IP30
Placement:	Indoors only
PRG options:	7 days, unlimited cycles
App:	Android and iOS
Certificate:	CE



DO YOU HAVE ANY FURTHER QUESTIONS?  
[bvfh heating.com/wifi-outdoor-thermostat](https://bvfh heating.com/wifi-outdoor-thermostat)







**230V**  
*Standard supply voltage*



**500W**  
*Performance*



**IP24**  
*Bathroom safe*



**Programmable**  
*Digital thermostat*



**1 year**  
*Warranty*

Towel drying is also suitable for independent heating with a heating power of 500W. Enjoy the ideal temperature and always warm and dry towels in the bathroom with the BVF Kobe towel dryer with programmable digital thermostat.

Ideal sizes for small and medium-sized bathrooms. The width of 54 cm makes it convenient to place towels, it is not necessary to crumple them between the pipes. Thanks to its rounded tubes, it provides plenty of space for drying towels and bathrobes quickly and efficiently.

Compared to traditional radiators with heating cartridges, it has completely dry technology, no liquid, liquid leakage, freezing or periodic maintenance.

## THERMOSTAT AT HANDLING HEIGHT

Even the most stylish bathroom only provides a real experience if the temperature is set right. You can also choose the Kobe electric towel dryer with individual control, which, depending on the size of the room, can also be used for independent heating.

The BVF Kobe thermostat is located at operating height, below the top row, not at the bottom, so you don't have to bend down to set the temperature compared to traditional towel dryers.

## PROGRAMMABLE DIGITAL THERMOSTAT

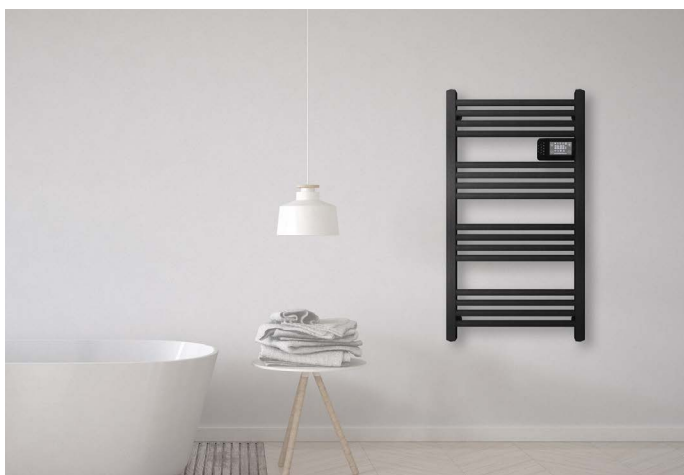
The digital thermostat built into the device allows you to program the towel dryer. Predefined and unique program options for the most economical operation and maximum comfort.

Don't like pre-programming your devices? That's no problem either. In manual mode, the digital thermostat can also be controlled with a simple „up-down“ setting, so you only need to set the desired temperature.



DO YOU HAVE ANY FURTHER QUESTIONS?  
[bvfh heating.com/electric-towel-dryer](https://bvfh heating.com/electric-towel-dryer)





## SIZES

Type	Size	Weight	Performance
KOBE 500 ○	540×960×43 mm	4,1 kg	500 W
KOBE 500 ●	540×960×43 mm	4,1 kg	500 W

## TECHNICAL DATA

Performance:	500W
Voltage:	230V
Cable length:	1,1m + EU plug
Color:	White / black
Mounting:	Wall only (bracket included)
Control:	Included digital thermostat
IP rating:	IP 24
Certificates:	CE



## BVF Wi-Fi room thermostats



PLACE YOUR ORDER AT  
[partnerzone.bvfheating.com](https://partnerzone.bvfheating.com)



### BVF Netmostat N-1 *Wi-Fi smart thermostat*

Reliable and fast remote access for any type of electric heating. The Netmostat N-1 thermostat fulfills even the strictest quality and usage requirements. Smartphone application available on any Android or iOS device. An internet connection faster and more stable than ever before due to the new built in Wi-Fi module. The server associated with the thermostat is one of the fastest and most dynamically growing cloud-based service.

- Standalone Wi-Fi module
- 16A relay load
- Air + NTC floor sensor 3m
- Android and iOS application



### BVF 801 *Wi-Fi smart thermostat*

The BVF 801 Wi-Fi thermostat itself is an easy to program room controller and with a quick smartphone pairing it can operate as a smart system. The thermostat gives you a remote access through any Android and iOS-based device, using one of the fastest smart cloud-based service system in the world. Control your home's temperature with an easy-to-use application wherever you go.

- Standalone Wi-Fi module
- Glass front panel
- Black and white colors available
- 16A relay load
- Air + NTC floor sensor 3m
- Android and iOS application







### **BVF 701**

#### *Programmable room thermostat*

The BVF 701 programmable room thermostat is suitable for controlling all types of electric heating and electric underfloor heating. The back side, equipped with a high-performance power switch typical of BVF thermostats, does not warm up even under extreme stress, real temperature detection is more accurate than ever.

- Programmable, 4-time cycles per day
- 16A relay load
- Air + NTC floor sensor 3m
- LCD display



### **BVF 24-FP**

#### *RF room thermostat for infrared heating panel*

The BVF 24-FP radio frequency thermostat consists of two parts (24-F transmitter and 24-P receiver), and it is specifically developed for BVF infrared panels. The receiver unit may be directly connected to the control of BVF infrared panels. The transmitter unit may be placed anywhere in the room. If you wish to concurrently control several infrared panels with the use of one thermostat, an additional 24-P receiver is needed for each infrared panel.

- Programmable, 4-time cycles per day
- 10A relay load
- Air sensor
- Sender + receiver
- LCD display



### **BVF 24-FX**

#### *RF programmable room thermostat*

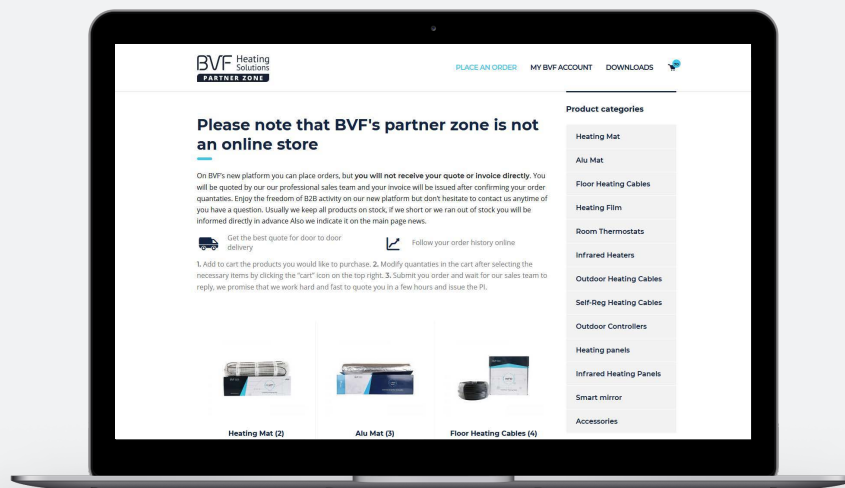
The unit consists of two parts: 24-F controller and 24-X receiver. The controller has been developed to operate electric surface heating units. Receiver part is designed for standard electric outlet. The controller can be placed anywhere in the room. Wall and table mount in the package. Suitable for controlling both infrared panels and underfloor heating.

- Programmable, 4-time cycles per day
- 16A relay load
- NTC floor sensor 3m
- Sender + receiver
- Radio signal strength up to 30m distance
- LCD display

# PARTNER ZONE

Have You already registered?

- Place your orders easily
- Track back your orders
- High quality photos and videos, editable marketing materials and user manuals, certificates



**PARTNERZONE.bvfheating.com**

## BVF Electronics Ltd.

Sales office

Kereskedelmi Park II. Tél utca 10.  
Nagytarcsa, 2142 Hungary

E-mail:  
Web:

eu@bvfheating.com  
www.bvfheating.com